

You can retrieve the ODBC administrator (64-bit) at the following location:

C:\WINDOWS\system32\odbcad32.exe

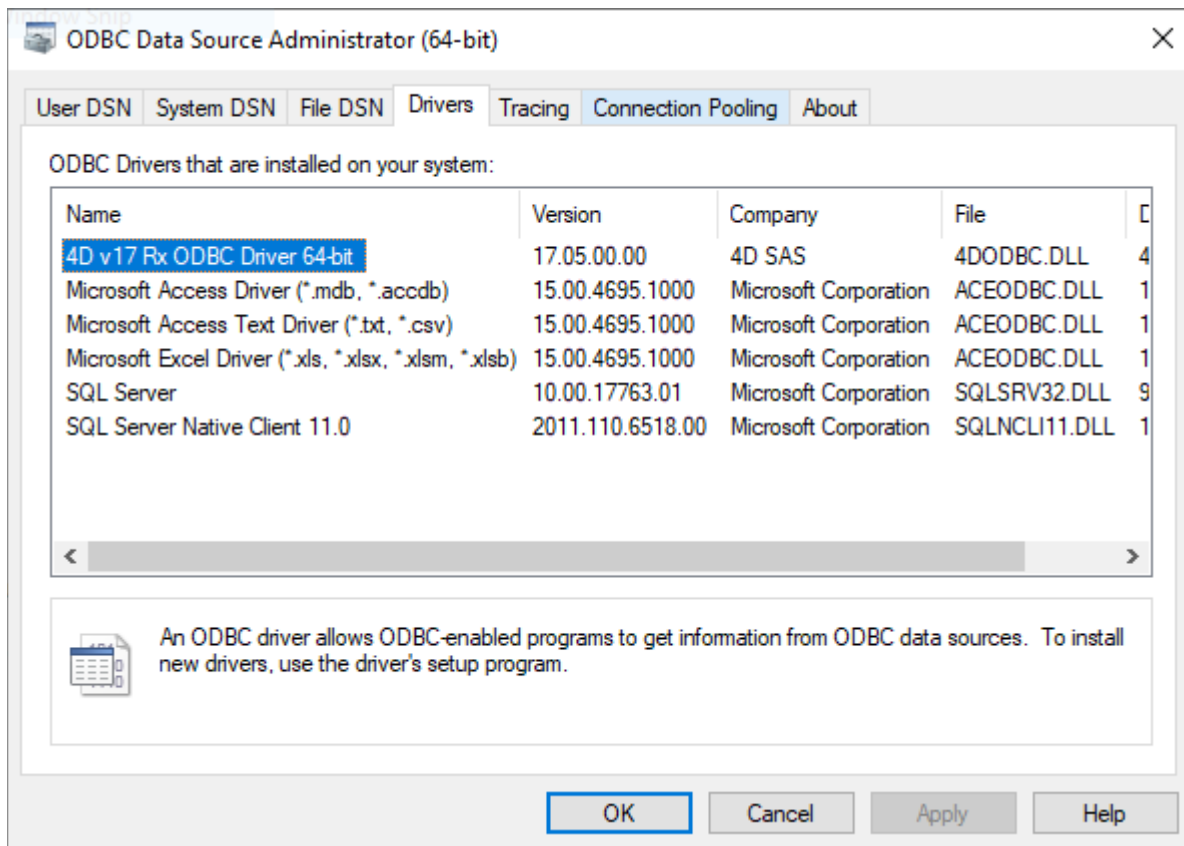
Creating a DSN

A DSN (Data Source Name) is a set of registry keys that enables an application, the ODBC client, to link to the native SQL Server of 4D or 4D Server. Applications such as Crystal Reports®, Word and/or Excel can all be ODBC clients, and you can also write your own ODBC client using Python, PHP, C, C++ or any language that enables ODBC use.

After running the ODBC Driver installer, you need to define a DSN in order to connect to the desired database.

To add a DSN, you launch the ODBC Data Source Administrator by selecting Start/Control Panel/Administrative Tools/Data Sources (ODBC).

Click on the "Drivers" tab to check that the 4D ODBC Driver is correctly installed:



To add a DSN using the 4D ODBC Driver:

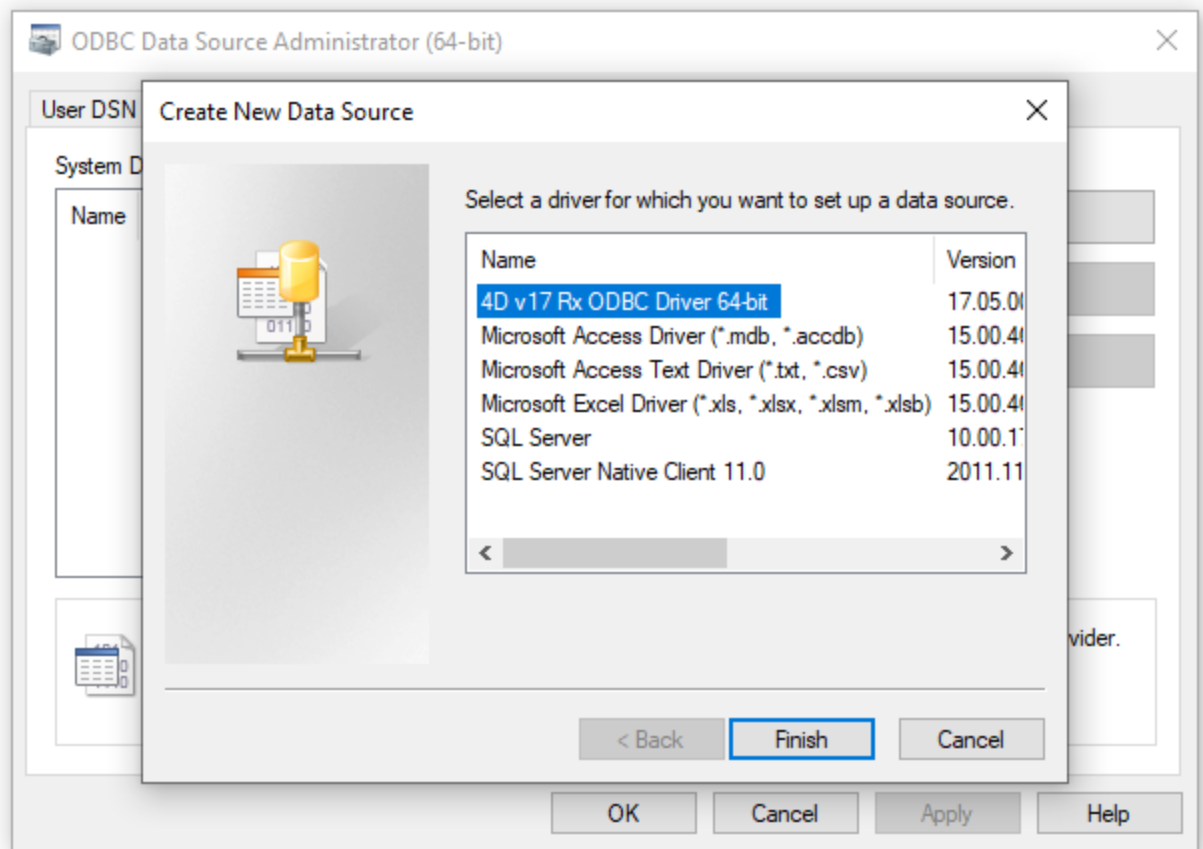
1. **Click on one of the following tabs:**

- "User DSN" (if you want to make this data source available only to the user currently logged on to this computer. This data source can only be used on the current machine).

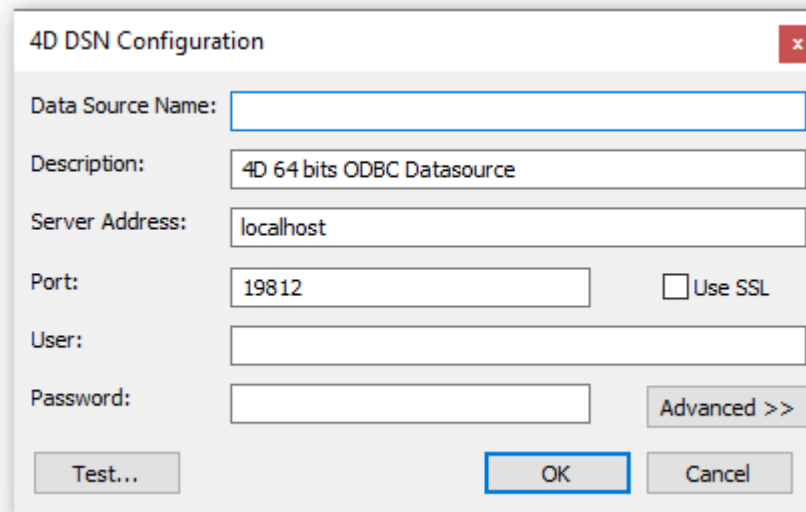
OR

- "System DSN" (if you want to make this data source available to all users from this computer, including NT services)

2. Click the **Add** button and choose the 4D ODBC Driver from the list of configured drivers:



3. Click **Finish**.
The 4D ODBC Driver's own configuration panel appears:



Note: When you select an existing DSN and click on the **Configure...** button, this same dialog appears pre-filled with all the DSN characteristics.

4. Click **OK** to save any changes before you close the configuration panel window.

Configuring your DSN

The fields of these dialog boxes need to be filled in with the following information:

- **Data Source Name:**
Enter a unique name for this Data Source.
Default: "".
This field is mandatory.
- **Description:**
Enter a short description of this Data Source.
Default: "".
This field is optional.
- **Server Address:**
Examples:

"localhost"	The 4D application is located on the local machine.
"PC-1"	The 4D application is located on the PC-1 machine, published on port 19812 (default port).
"148.1.2.3"	The 4D application has the IP address 148.1.2.3.

- Default: "localhost".
This field is mandatory.
- **Port:**
Enter the 4D access port.
Default: "19812".
This field is optional.
- **SSL checkbox:**
Checking this option enables connection to the 4D Server if the "Enable SSL" option has been set on the SQL/Configuration page of the Database Properties.
- **User:**
Enter the user name used to test the connection with 4D.
Default: "".
This field is optional.
- **Password:**
Enter the password used (in conjunction with the user name) to test the connection with 4D.
Default: "".
This field is optional.
- **Test button**
Tests the connection with the current parameters.
Uses "User Name" and "Password" fields to login.

Advanced settings

Clicking on the **Advanced >>** button gives you access to additional options as shown here:

4D DSN Configuration

Data Source Name:

Description:

Server Address:

Port: ☐ Use SSL

User:

Password: [Advanced <<](#)

Timeouts (Seconds)

Connection: Login: Query:

Favorite image formats

Encoding

☒ UTF-8
 ☐ System

Cache Settings

First Page (Rows):

Packet Size (Kb):

Compatibility

☐ Open Query
 ☐ MSAccess
 ☐ Windev

Timeouts (Seconds)

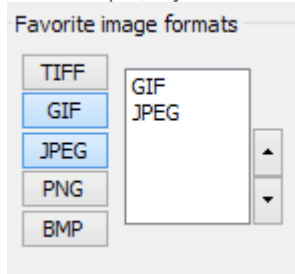
- **Connection:**
Enter the timeout in seconds to be used (0 means no timeout) after you log in for the driver to connect to a socket on the server:port address.
Default: "".
This field is optional.
- **Login:**
Enter the timeout in seconds to be used (0 means no timeout) when the driver sends a request and receives the status from the server.
Default: "".
This field is optional.
- **Query:**
Enter the timeout in seconds to be used (0 means no timeout) when waiting for a response after a query to the server.
Default: "".
This field is optional.

Favorite image formats

Pictures stored in 4D databases are retrieved by ODBC as Blobs. This setting lets you select the formats you prefer. By default, if you do not choose any favorites, 4D selects the best format available with respect to screen display.

When you choose one or more formats, 4D only provides one of those formats (in order of preference). If there are no pictures available in any of your favorite formats, 4D converts the pictures to the first format in the list.

For example, if you have selected GIF and JPEG as your favorite image formats:



4D first checks whether there are any .gif or .jpeg formats available. If neither are available, then it converts the formats to .gif since it is first in the list.

Encoding: sets the text encoding.

- UTF-8 (Unicode) (recommended)
- System (depends on the settings of your OS)

Cache Settings: used to modify how the network handles the cache. Generally, these settings should be left untouched.

Compatibility: settings to enable the ODBC Driver to work properly with OpenQuery, MSAccess and/or Windev. They should only be checked if you encounter problems with these particular app